

Picture That

CONSULTANTS

PT FOUNDATION DIVERSITY IN PATENT LAW

Art for Sale Catalog by Emerging Artists

Themes include: Legal, Diversity/Equity/Inclusion (DEI), Black History and Inventions

Art Selections as of January 28, 2021

Art Curator: Picture That Consultants – www.picturethatconsultants.com

Table of Contents

Legal	3
Diversity, Equity & Inclusion (DEI)	17
Black History	30
Inventions	49
Contact us	57

Welcome to the World of Picture That LLC

We are excited to offer these remarkable artwork selections by emerging artists.

To place an order (*prices do not include shipping & handling*), please click on the order form below:

[ORDER FORM](#)

If you have

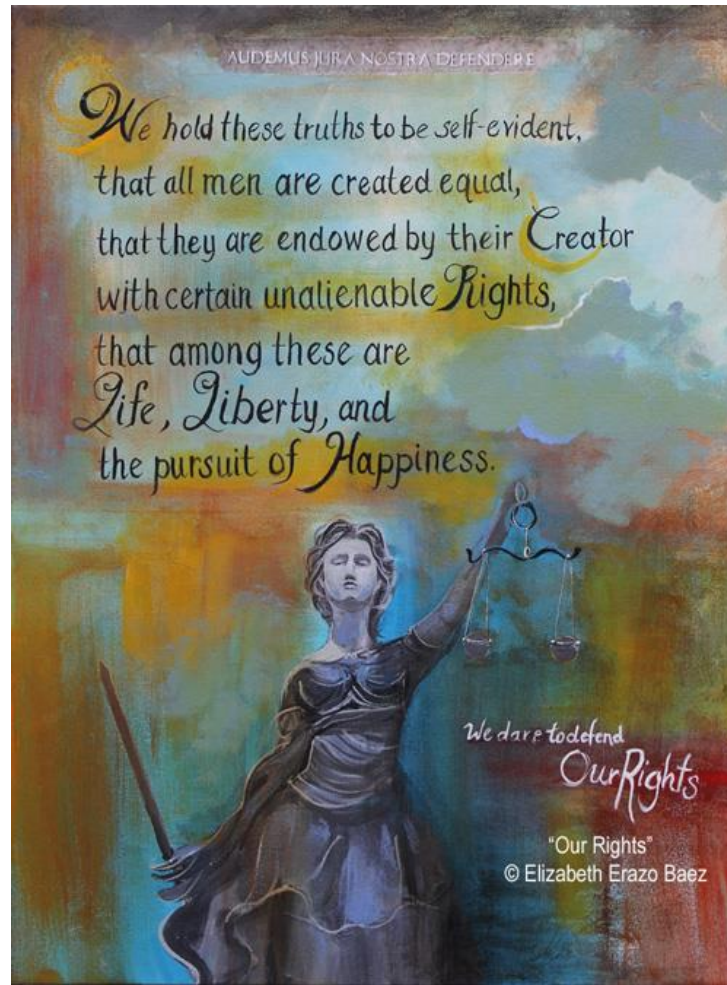
- Additional Questions
- Require different sizes
- Would like to discuss an art commission

Contact fineart@picture-that.com or (203) 977-8203

We appreciate you supporting this fundraising campaign. A portion of the proceeds will be donated towards the PT Foundation scholarship fund.

Legal

1. Our Rights by Elizabeth Erazo Baez



Our Rights, giclee on paper reproduction print; 30" h x 24" w; \$900

2. Champions of Justice by Ted Ellis



Champions of Justice, limited edition lithograph, edition size: 950; 24" h x 35" w; \$425

3. Together We Win by Ted Ellis



Together We Win | Lawyers Meeting, signed and numbered, limited edition of 250; 24" h x 30" w; \$625

4. Exhibit A by Ted Ellis



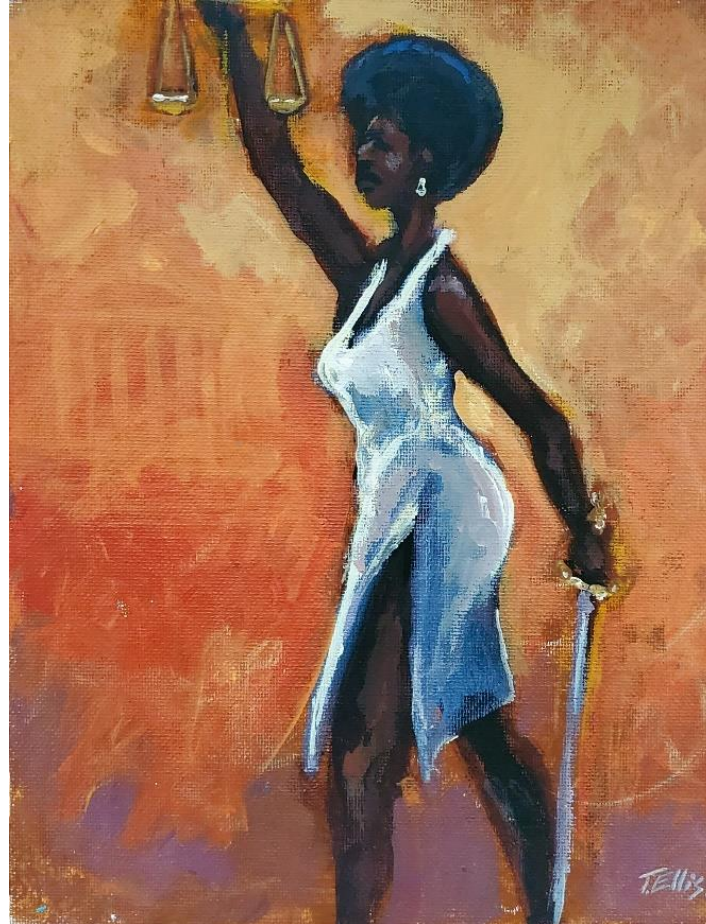
Exhibit A, limited edition lithograph, edition size: 1350; 18" h x 24" w; \$425

5. Justice by Ted Ellis



Justice, signed and numbered, limited edition prints of 100; 22" h x 28" w; \$1,250

6. Lady Justice by Ted Ellis



Lady Justice | Blind Justice, signed and numbered, limited edition of 250; 28" h x 22" w; \$625

7. Justice Must Prevail by Ted Ellis



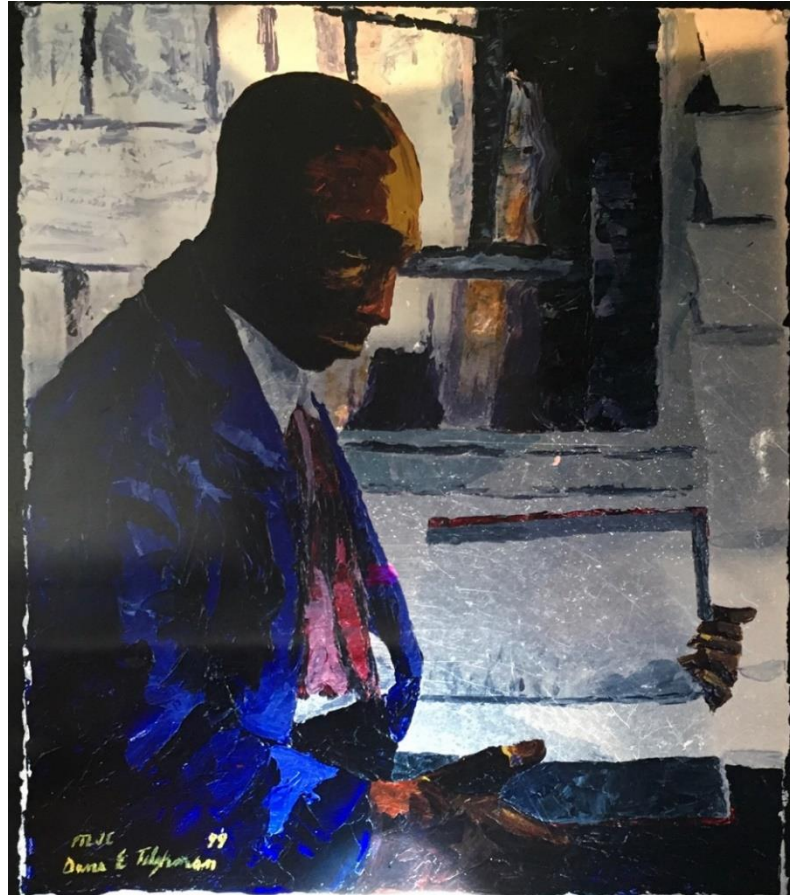
Justice Must Prevail, original acrylic on canvas; 18" h x 24" w; \$7,500.00

8. The Fight for Truth and Justice by Ted Ellis



The Fight for Truth and Justice, original acrylic on canvas; 30" h x 40" w; \$25,000.00

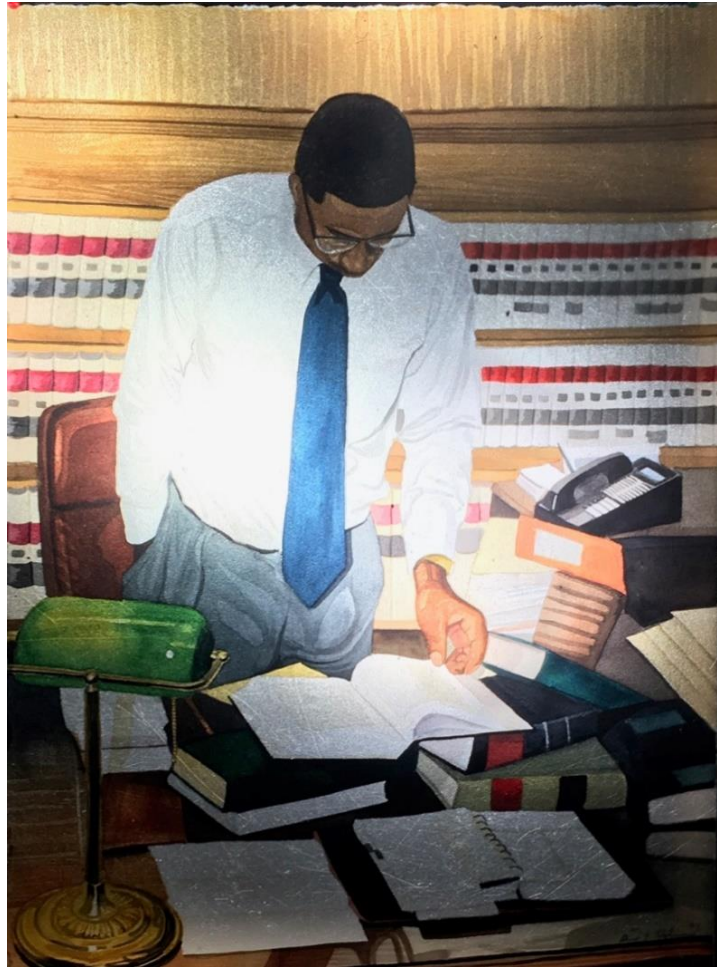
9. Old Time Lawyer by Dane Tilghman



9A: Old Time Lawyer, original acrylic on paper only available in giclee (on stretched canvas and embellished); 30" h x 22 w"; \$3,200

9B: Original acrylic on paper only available in giclee (on watercolor paper); 30" h x 22 w"; \$1,500

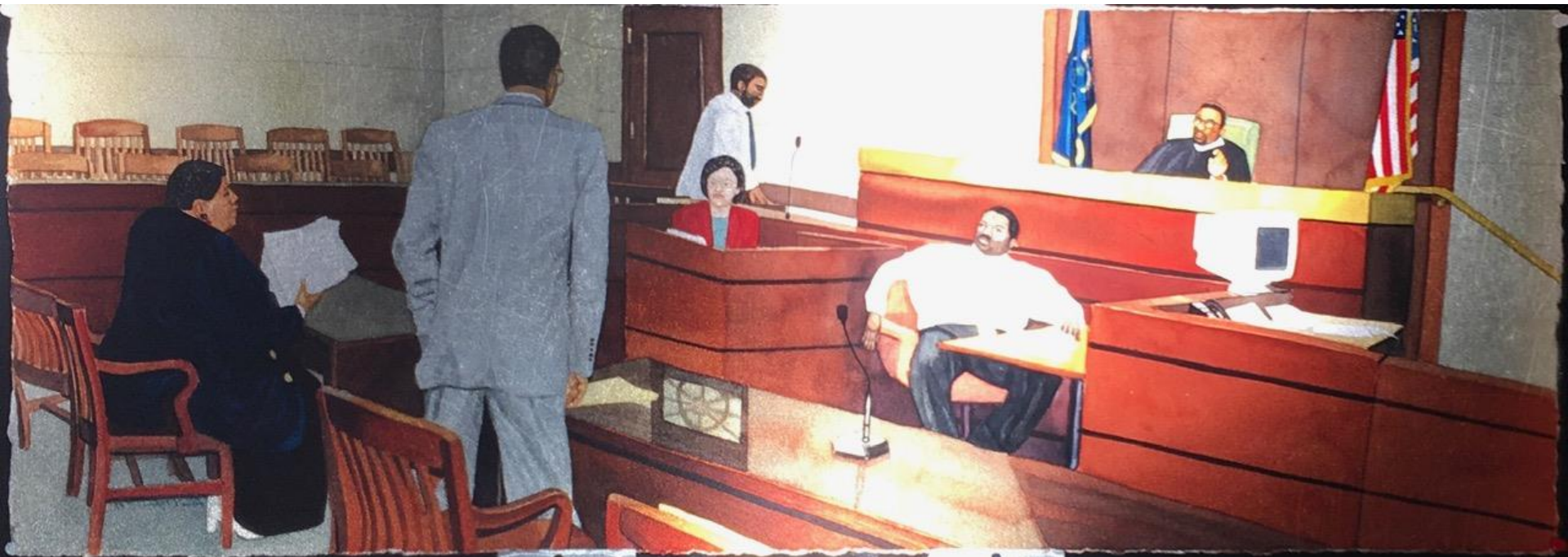
10. Working Late in the Office by Dane Tilghman



10A: Working Late in the Office, original watercolor giclee (on stretched canvas and embellished) 40" h x 30" w; \$2,800

10B: Original watercolor giclee (on watercolor paper) 40" h x 30" w; \$1,800

11. Before the Judge by Dane Tilghman



11A: Before the Judge, giclee (on stretched canvas and embellished); 15" h x 40" w; \$2,300

11B: Giclee (on watercolor); 15" h x 40" w; \$1,600

12-13 Legal Application and Legal Balance of Justice

by Gigi Barrett



12. Legal Application, acrylic & oil on canvas; 8" h x 10" w; \$250



13. Legal Balance of Justice, acrylic & oil on wood board 10" h x 10" w; \$250

14. The Blacksmith by Michael L. Parchment



14A: The Blacksmith, acrylic on canvas; 18" h x 24" w; \$1,600

14B: Canvas prints; 16" h x 20" w; \$150

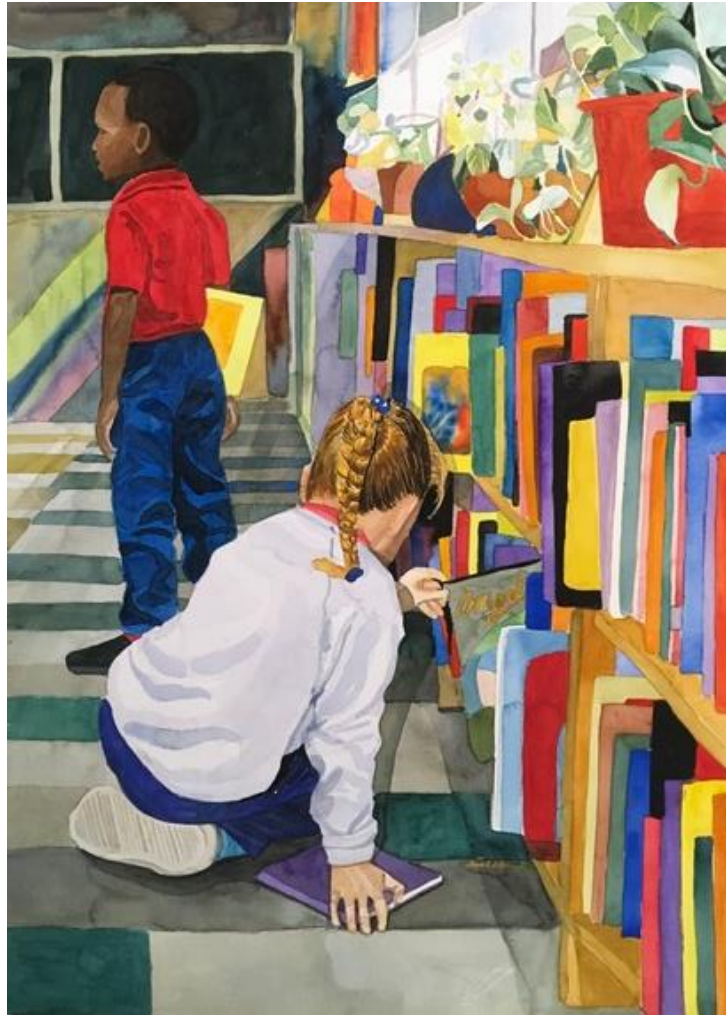
Diversity, Equity & Inclusion *(DEI)*

15. Mentors by Dane Tilghman



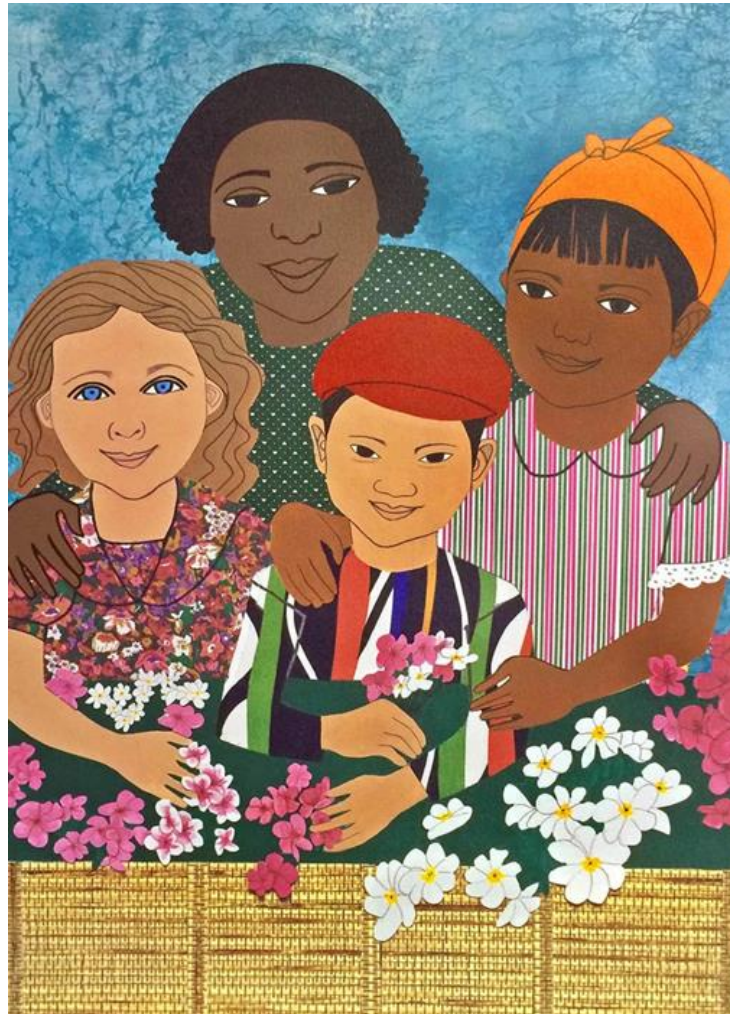
Mentors, acrylic on watercolor paper; 29" h x 29"w; \$8,500.00

16. The Library by Dane Tilghman



The Library, watercolor on watercolor paper; 40'' h x 30'' w; \$7,500

17. Children With Flowers by Elizabeth Catlett



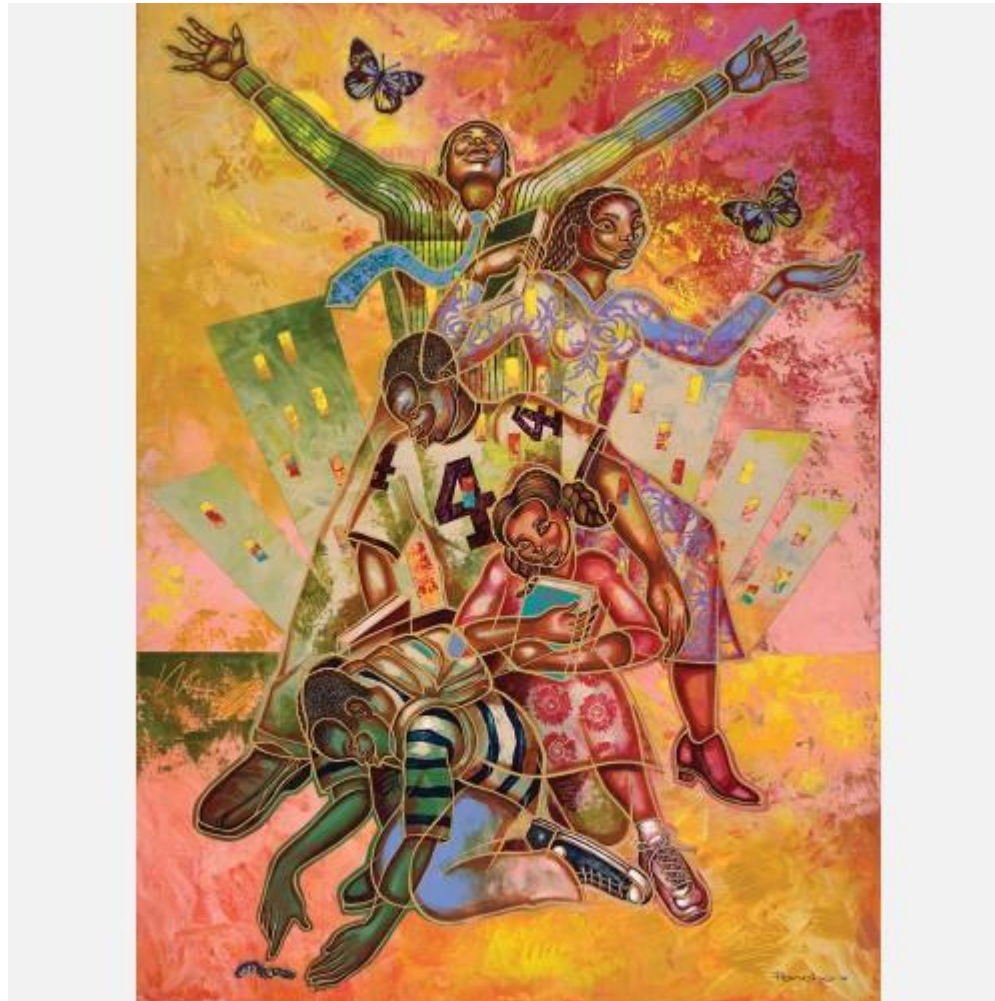
Children With Flowers, signed and numbered Limited Edition Print 100/150, framed; 25''h x 21'' w; \$3,000

18. Diversities by Larry "Poncho" Brown



Diversities, print; 28" h x 22" w; \$240

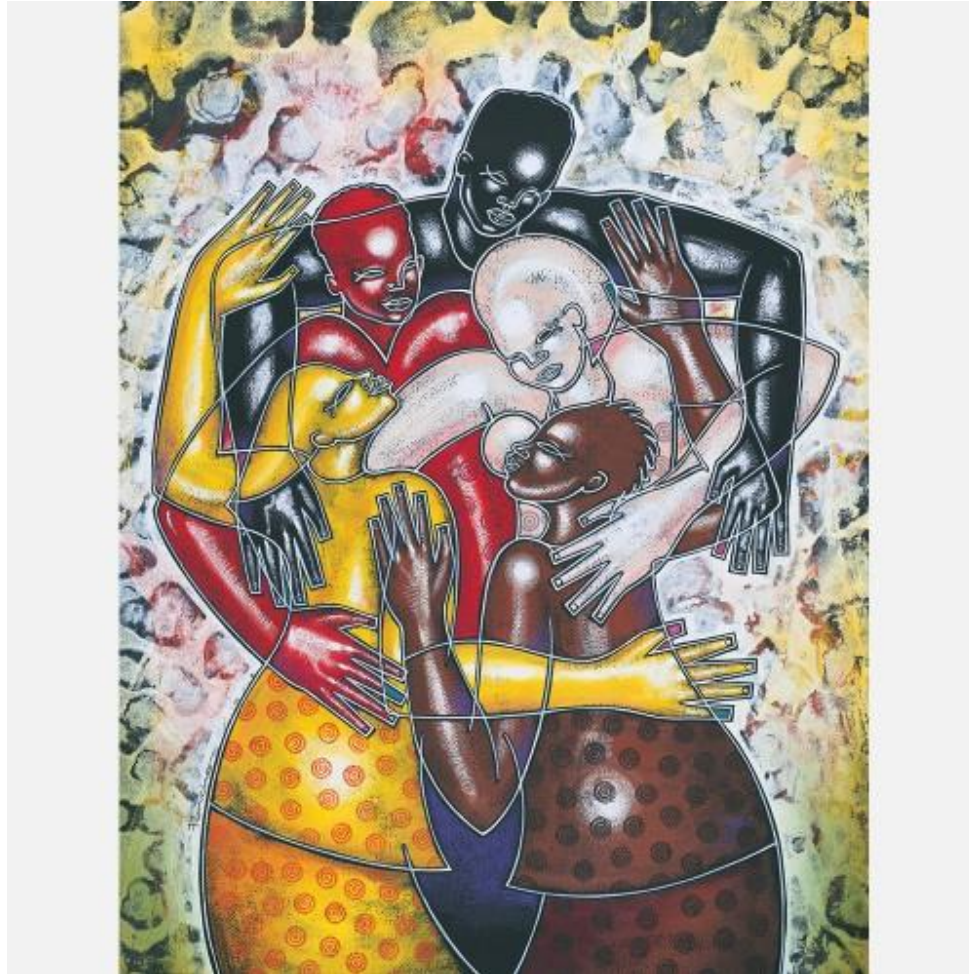
19. Metamorphosis by Larry "Poncho" Brown



Metamorphosis, limited edition print; 29.75" h x 22" w; \$275

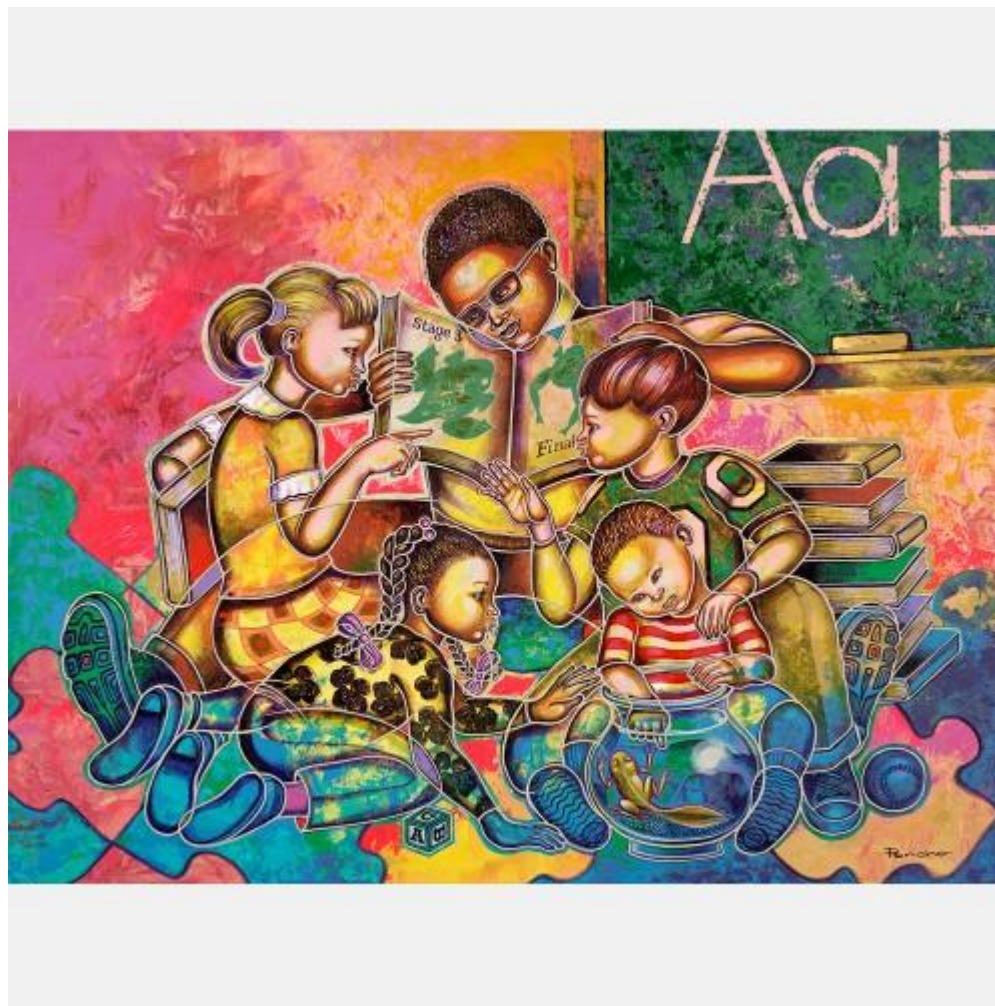
Picture That LLC, Soundview Plaza, 1266 East Main Street - Suite 700R, Stamford, CT 06902 • www.picturethatart.com • 203.977.8203
All materials within this proposal are copyright 2014 Picture That LLC and may not be reproduced without permission.

20. Art of Inclusion by Larry "Poncho" Brown



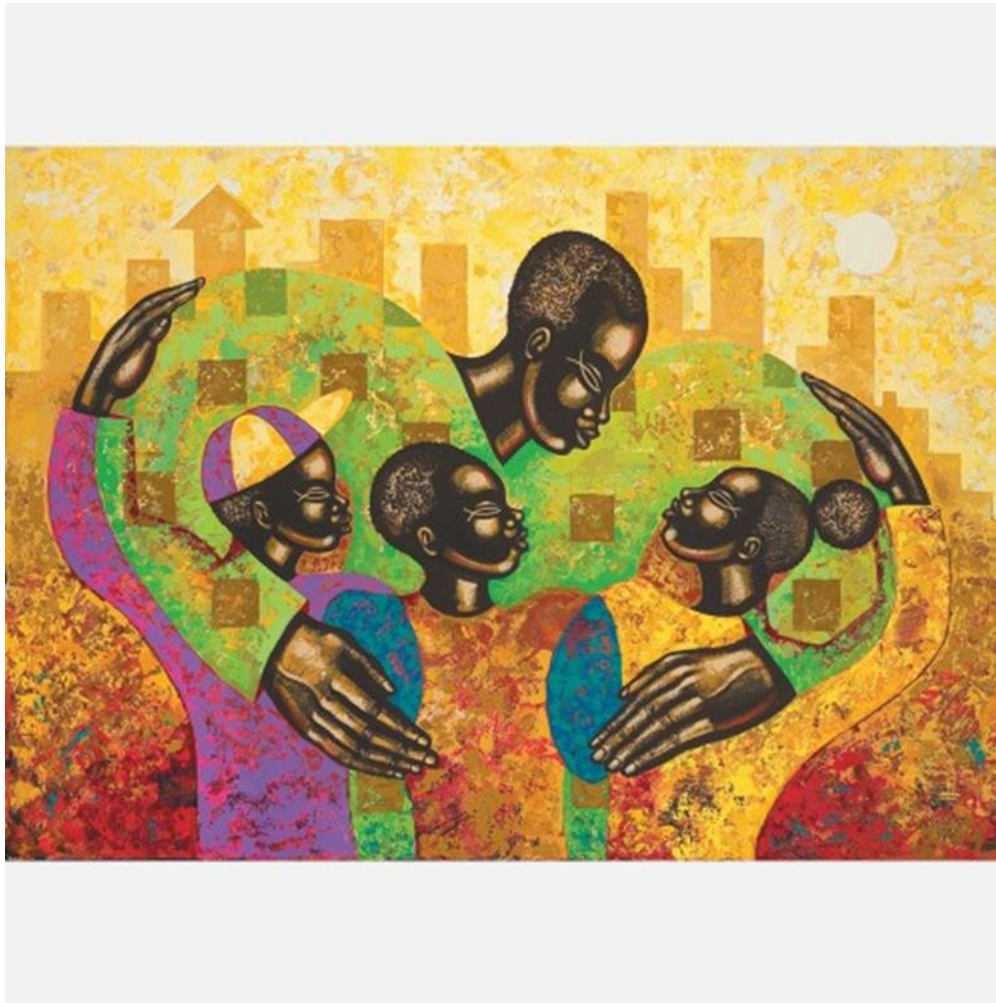
Art of Inclusion, limited edition print; 31" h x 22" w; \$290

21. A Legacy of Love & Learning by Larry "Poncho" Brown



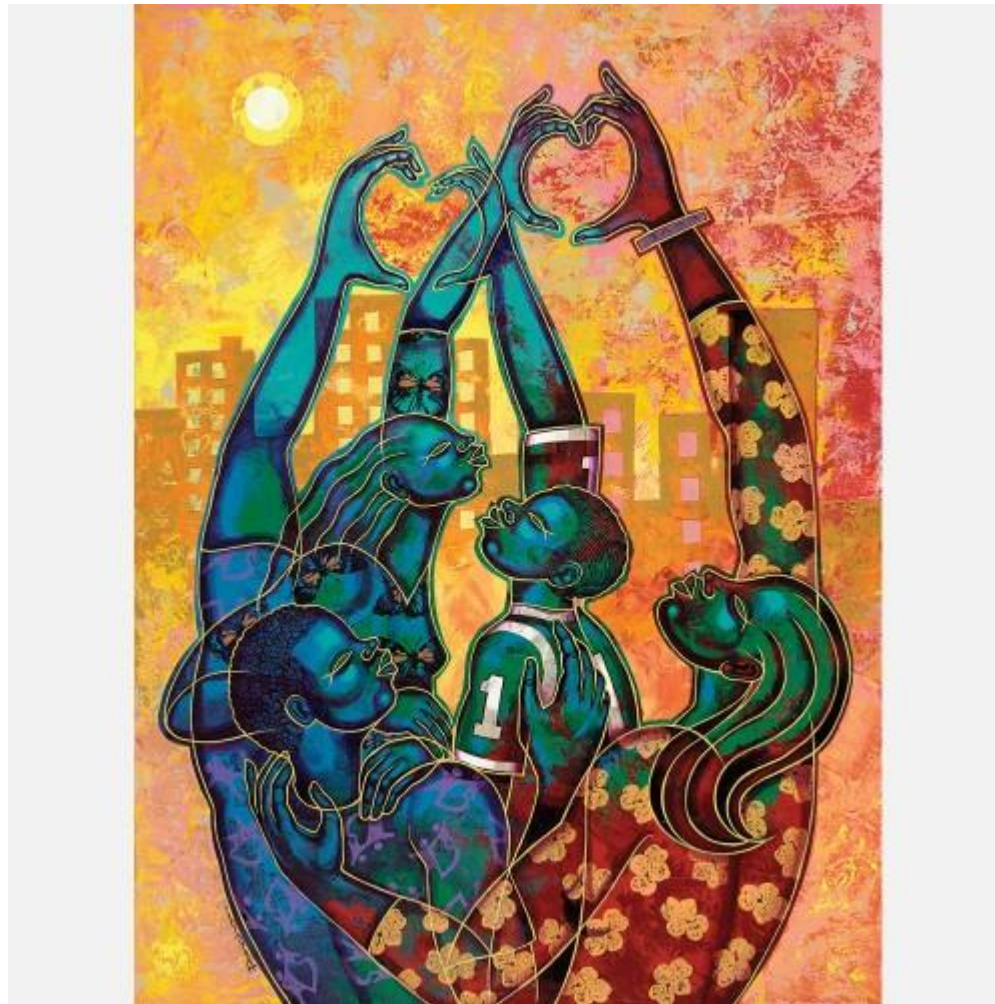
A Legacy of Love & Learning, limited edition print; 28" h x 22" w; \$275

22. The Spirit of Fatherhood by Larry "Poncho" Brown



The Spirit of Fatherhood, limited edition print; 29" h x 22" w; \$275

23. It's all about Love by Larry "Poncho" Brown



It's all about Love, limited edition print; 28" h x 22" w; \$275

24. GOODTIMES by Joan Walsh



24A: GOODTIMES, oil on canvas; 18" h x 24" w; \$2,000—24B: print; \$150

Painting portrays Dr. Martin Luther King, Jr 's quote:

"I have a dream that one day little black boys and girls will be holding hands with little white boys and girls." – Joan Walsh

25. Achieve by Joan Walsh



25A: Achieve, oil on canvas; 24" h x 36" w; \$2,000—25B: print; \$300

26. Teamwork by Joan Walsh



26A: Teamwork, oil on canvas; 24" h x 36" w; \$2,000—26B: print; \$300

Black History

27. The March by Joe Roach



The March, print; 18" h x 36"w; \$150

28. Everything Will Be Alright I Just Know It Will by Kerry James Marshall



Everything Will Be Alright I Just Know It Will, woodcut and screen print on BFK Rives grey, framed; edition: 23/25 (2004); 30" h x 44" w; 1 1/2" woodcut; \$38,000

29. Jazz Dancer by Kathy Ammon



Jazz Dancer in Blues, Oil on paper, framed and matted with over all dimension of 27.5 x 33.5; \$850

30. Black Vets by Dane Tilghman



Black Vets, mixed media pencil and watercolor on watercolor paper; 40" h x 30" w; \$8,700

31. Return to Selma by Fran Steinmark



Return to Selma, acrylic on canvas; 40'' h x 30'' w; \$3,400

Picture That LLC, Soundview Plaza, 1266 East Main Street - Suite 700R, Stamford, CT 06902 • www.picturethatart.com • 203.977.8203
All materials within this proposal are copyright 2014 Picture That LLC and may not be reproduced without permission.

32. Commercial Print



Harriet Tubman, Booker T. Washington, print; 36" h x 24" w; \$239

33. Dream King by Rich Patton



Dream King, mixed media collage on canvas; 24" h x 18" w; \$700

34. King Series #2 by Rich Patton



King series #2, mixed media collage on canvas; 24" h x 18" w; \$750

35. No Justice, No Peace by Rich Patton



No Justice, No Peace, mixed media collage on canvas; 24" h x 18" w; \$1,000

36. Dr. Martin Luther King Jr. by Alissa Siegal



25A: Dr. Martin Luther King, Jr., charcoal, acrylic, and oil paint on canvas; 20" h x 14" w x 1/2"; \$850

25B: Dr. Martin Luther King Jr., archival prints; 24" h x 11" w; \$125

37. Shine The Light by Najee Dorsey



Shine the Light, signed and numbered limited edition of 26, 15" h x 17" w; \$900

38. This My Baldwin by Najee Dorsey



This My Baldwin, photomontage, digital collage on premium archival paper, limited edition of 26 signed and numbered, 20" h x 30" w, \$2,500

39. Garden Art—All That Jazz by Najee Dorsey



Garden Art—All That Jazz, 28" h x 14" w, \$79

40. Garden Art—Black Lives Matter by Stacey Brown



Garden Art—Black Lives Matter; 27" h x 15" w; \$79

41. Mr. Peacock Jones by Najee Dorsey



Mr. Peacock Jones, mixed media on gallery wrap canvas, framed; 40''h x 30'' w; \$12,000

42. Pilate

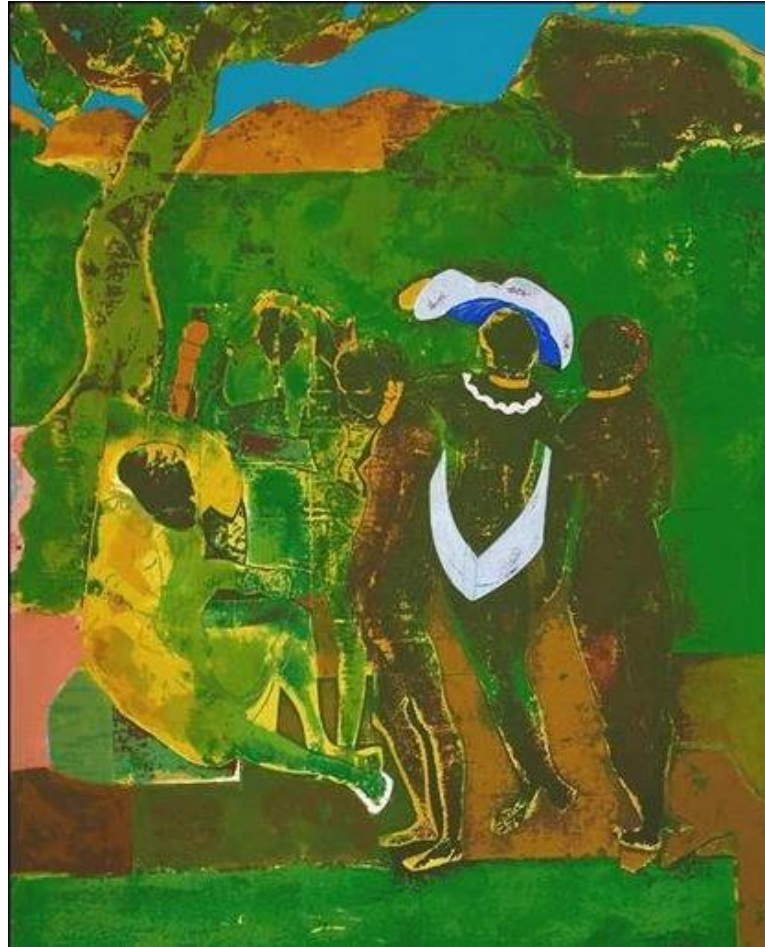
by Romare Bearden



Pilate, color lithograph, 1979, full margins. Signed and numbered 40/300 in pencil, lower margin. Framed with conservation clear glass; 20”h x 15” w; \$5,800

Picture That LLC, Soundview Plaza, 1266 East Main Street - Suite 700R, Stamford, CT 06902 • www.picturethatart.com • 203.977.8203
All materials within this proposal are copyright 2014 Picture That LLC and may not be reproduced without permission.

43. Prologue to Troy, Before Troy From the Prevalence of Ritual Portfolio by Romare Bearden



Prologue to Troy, Before Troy From the Prevalence of Ritual Portfolio, screenprint signed & numbered edition 65 of 100, (1974), unframed; 36''h x 29.9'' w; \$8,500

44. Lost and Found Again by Zoya Taylor



Lost and Found Again, oil on linen canvas, unframed; 30”h x 40” w; \$6,000

Inventions

45. Commercial Print



George W. Carver, print; 36''w x 24''w, \$259

46. Commercial Print



Belle Époque Madam CJ Walker print; 24" h x 24 w; \$185

47. Commercial Print



Garrett Morgan, print; 20" h x 16" w; \$196

48. Commercial Print

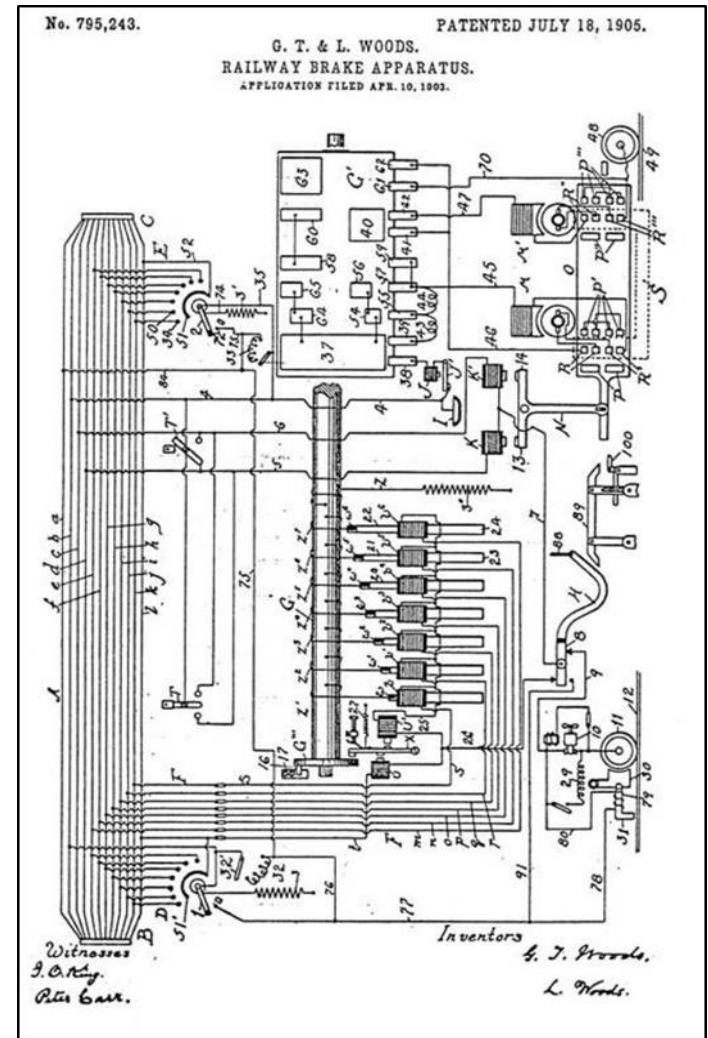


Elijah McCoy, print; 36" h x 24" w; \$327

49. Commercial Print



49A: Granville T. Woods, print; 36" h x 24" w; \$206



49B: print of Wood's invention; 30" h x 20" w; \$190

50. Commercial Print

MAJOR INVENTORS & SCIENTISTS
RESPECTING THE POWER OF OUR PAST, PRESENT & FUTURE!

* DR. GEORGE WASHINGTON CARVER (1)
 * DR. GEORGE COLLEY (19)
 * DR. BENJAMIN CARSON (20)
 * DR. THOMAS MENSAH (21)
 * DR. DANIEL H. WILLIAMS (15)
 * DR. GEORGE CARUTHERS (18)
 * DR. JANE C. WRIGHT (5)
 * DR. JAMES E. WEST (16)
 * DR. DONNA ALQUISTE (17)
 * DR. GARRETT MORGAN (9)
 * DR. ALNUGE
 * DR. JESSE RUSSELL (8)
 * DR. PATRICIA BATH (11)
 * DR. CLAUDE BROWN (14)
 * DR. ELIJAH MCCOY (13)
 * DR. GRANVILLE T. WOODS (4)
 * DR. EMMETT CHAPPELLE (72)
 * DR. LEWIS LATIMER (6)
 * DR. NEIL GRASSE TYSON (22)

(1) AGRICULTURE, (2) MICRO PROCESSING CHIPS, (3) SHOE MACHINE, (4) TELEPHONES & RAILWAY TRAIN, (5) CHEMOTHERAPY,
 (6) ELECTRIC LIGHT, (7) JALINGEE (S.T.M. COURSE), (8) DIGITAL CELLULAR NETWORKS (2G TECH), (9) TRAFFIC LIGHTS & GAS MASK, (10) PROGRAMMABLE REMOTE CONTROL,
 (11) LASER EYE PROBE SURGERY, (12) LYOPHILIZED REACTION COMPOUND, (13) LUBRICATING SYSTEMS, (14) BLOOD PLASMA, (15) 1ST OPEN HEART
 SURGERY / 1ST INTERRACIAL HOSPITAL, (16) MICROPHONE, (17) HANDHELD COMPUTERS/PDA's, (18) FAR-ULTRAVIOLET CAMERA & SPECTROGRAPH,
 (19) THERAPEUTIC AMPUTEE EXERCISING MACHINES, (20) PIONEERING NEBROSURGERY, (21) FIBER OPTICS (22) ASTROPHYSICS WORLD AUTHORITY - WWW.BLACKMIRACLES.COM
 COPYRIGHT 2011 PURPOSE PUBLISHING, INC. W. R. MAPP *PURPOSE PUBLISHING HONORARY PHD

SCIENCE + TECHNOLOGY + ENGINEERING + MATHEMATICS

ROLE MODELS

Print; 36" h x 24" w; \$199

51. Commercial Print



Black Inventors Poster; 24" h x 18" w; \$100

Contact Us

Picture That, LLC

Soundview Plaza
1266 East Main Street, Suite 700R
Stamford, CT 06902



Phone: 203-977-8203

General Inquiries
fineart@picture-that.com
www.picturethatart.com

Southeast Region

TWELVE Centennial Park
400 W Peachtree St. NW, Suite 3006
Atlanta, GA 30308

